



1. APPLICATION

The automatic valve (non-rotating) can be opened by pneumatic and manual release mechanism. The release pressure of the pneumatic release mechanism has to be min. 30 bar up to max. 240 bar.

The automatic valve comes assambled on Cylinders as necessary on Project, valve types may shown difference. When system activated automatic vave release CO² gas to the system.

If valve stuck or e.g and does not work, when using a stick-on lever (to be secured with a safety pin), the valve can be activated manually.

The valve is equipped with a bursting device (burst pressure acc. To customers specification). When using inert gasses, the bursting device can be replaced by a closing plug.

Please make sure that the filled cylinder is equipped with a closing nut at the valve outlet and a suitable 'protection cap for transport.

ATTENTION Pressure operated valve has safety pin on it. Until ship's departure this pin must be plugged. Before departure do not forget take out that safety pin.

2. INSTALLATION

During installation, pressure operated valve must fastening as seen as project drawing which given by ALMAR.

Each cylinder comes with assembled automatic valve.

Be sure the pressure operated valve is not damaged.

End user is responsible for applying all safety precautions.

3. MECHANICAL PROPERTIES

For thread dimensions and general informations (meterial, Test pressure e.g) please see table 3.1 and table 3.2.

PROUDCT NO.	Typ.	THREADS DIMENSION			PRE. RELEASE CONNECTION	WEIGHT [KG]
		INLET THREAD	SIMPLE TUBE THREAD	OUTLET THREAD		
AL20-40015	BKH-DN4-G1/4	W28.8 DIN477	M16 X 1	W21.8 X 1/4"	3/8 BSP Female	0.8

TABLE 3.1 THREADS DIMENSIONS OF AUTOMATIC VALVE

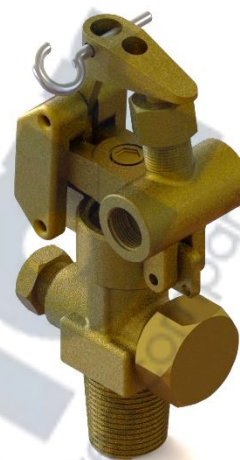


Figure 1.1





For general information and more details please see table 3.2

GENERAL INFORMATION	
METARIAL	Heat press forged BRASS
BURSTING DISC	190 [bar] bursting pressure
VALVE OUTLET AREA	0.79 cm ²
TEST PRESSURE	250 [bar] without burst disc
WORKING PRESSURE	200 [bar]

TABLE 3.2 GENERAL INFORMATION OF AUTOMATIC VALVE

4. ACCESSORIES

a. 3/8" Plug

As much as cylinder, there must be pressure operated valve. Each automatic valve makes connection between cylinders with pilot hose. The system must be closed, by that reason the last automatic valve must be dull. For this purpose 3/8" plug used for last pressure operated valve outlet.

b. Safety Pin

Automatic valve comes with safety pin on in this way while transportaion valve keeps cylinders safe.

c. Crowbar

In emergency situations if valve does not open itself use the crowbar that comes with valve and activate valve.

5. MAINTANANCE

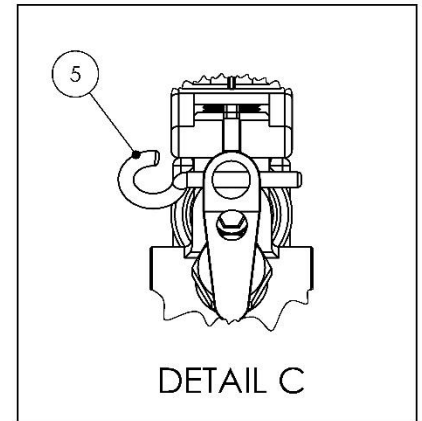
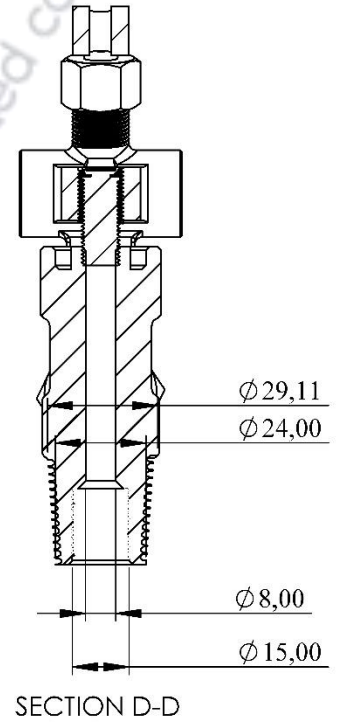
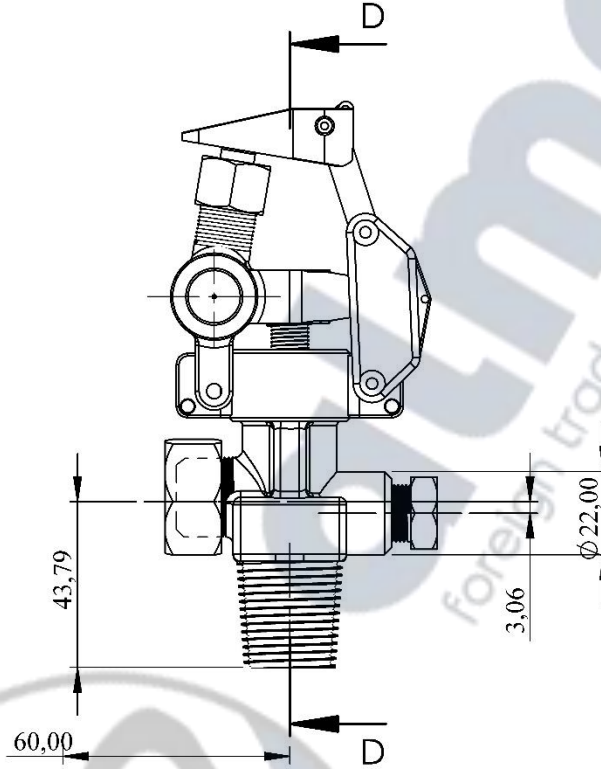
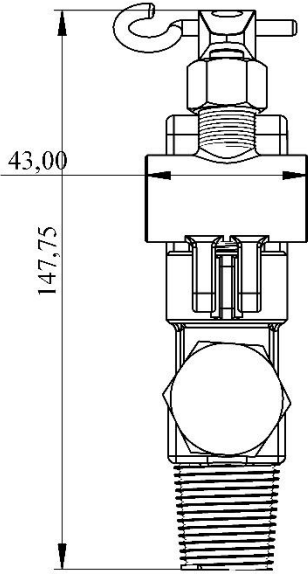
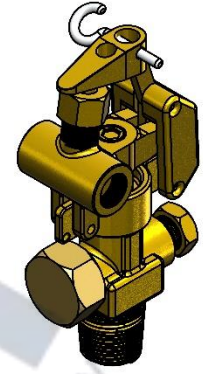
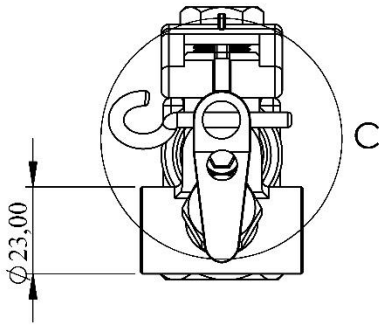
If any automatic valve is found to be in a poor condition, (rusty, damaged, etc.), please contact recognised service company.

Full maintenance should be performed by persons specially trained in the maintenance of such systems, e.g. manufacturer or recognised service company.

6. DIMENSIONS & TECHNICAL DRAWINGS

Please see following page for detailed dimensions and technical drawings.

AUTOMATIC VALVE



COMMENT: Automatic valve comes fastened on related cylinder. Component has a safety pin on it (shown as 5). Please see Datasheet AT.20-40015Sept20-Rev01 for more detail.
BSPT (British Standard Pipe Tapered)

NOTE: ALL DIMENSIONS ARE GIVEN AS MILLIMETERS

DRAWING NO:	POS. NO. 4	PROODUCT NO: AT.20-40015	DATASHEET: AT.20-40015Sept20-Rev01	PAGE A4
DESIGNED BY: ALİ ARMAĞAN	CHEKED BY: ÇAĞLAR LATİFOĞLU	APPROVED BY: ERDİNÇ LATİFOĞLU	DATE: 09/09/2020	SCALE: 1:2
almar <small>foreign trade limited company</small>		PROJECT / PROODUCT: AUTOMATIC VALVE		
		WEIGHT: 0.8KG	MFTARIAL: BRASS	REVISION: Sept20-Rev01