



1. APPLICATION

The Nozzle is a product that provides, equally distribution of CO₂ gas in optimum time. Each system has own project that includes nozzles in different diameter dimension, by that system works in as much as time that desire.

2. INSTALLATION

Pipe work is to be pressure tested before to installation of nozzle.

The location and quantity of nozzles are specific for each project. For best result please see your unique Project drawings.

Nozzle which located at end of the branch must be install like in fig 2.1.

If nozzle located within a meter of a boundary bulkhead they should be oriented at 45 deg to the vertical as shown in picture 2.2, this allows the CO₂ jet to "bounce" off vertical and horizontal surfaces for enhanced distribution.

Be Careful when positioning nozzle's, the radial nozzle jets must not be aimed loose equipment that may became detached during discharge.

Before installing nozzles ensure that the jet stamped on nozzle bottom corresponds to the pipework schematic location.

Nozzle can be fastened with PFTE-tape or similar jointing compound.

It is proffered that nozzles should not be painted but if panting required then ensure that no paint gets into jet pore's.

All nozzles jet numbers must follow the pipework schematic for commissioning testification.

Test each nozzle for free movement of airflow
Ensure that pipework is free from blockage by connecting low pressure compressed air line at



Figure 2.1

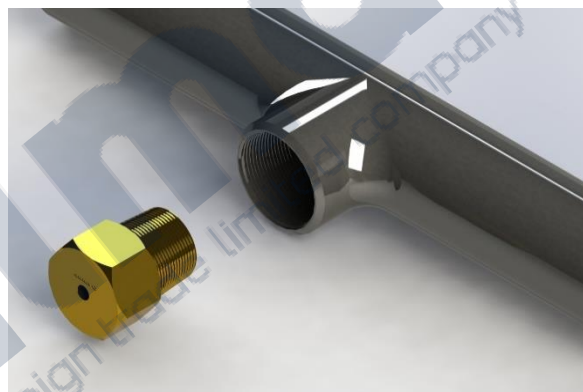


Figure 2.1

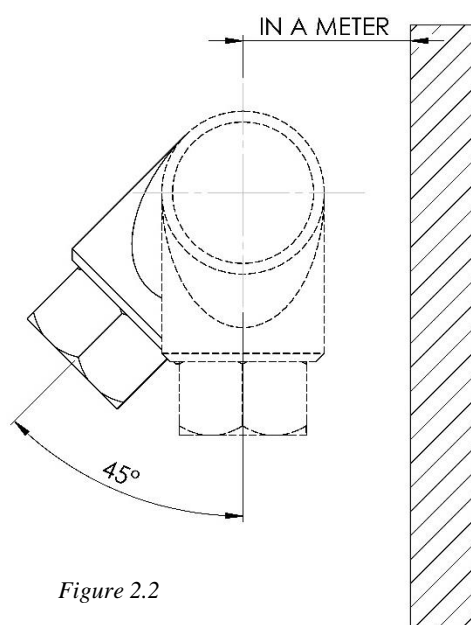


Figure 2.2

AL20-4003Rev00 numbered datasheet included prouducts AL20-4003 between AL20-40052.Please see table 3.1 or/and 3.2 for details.



3. MECHANICAL PROPERTIES

CO2 nozzles are threaded 1/2” BSPT male. The nozzle type may change according to the project.

For all nozzle types please see table 3.1 and/or table 3.2. Before order see your project drawings and find the type of nozzle that you need.

TYPE	D [mm] Ø
AL20-40033	15mm X Ø2.40mm
AL20-40034	15mm X Ø2.80mm
AL20-40035	15mm X Ø3.20mm
AL20-40036	15mm X Ø3.60mm
AL20-40037	15mm X Ø4.00mm
AL20-40038	15mm X Ø4.40mm
AL20-40039	15mm X Ø4.80mm
AL20-40040	15mm X Ø5.20mm
AL20-40041	15mm X Ø5.60mm
AL20-40042	15mm X Ø6.00mm

Table 3.1

TYPE	D [mm] Ø
AL20-40043	15mm X Ø6.40mm
AL20-40044	15mm X Ø6.80mm
AL20-40045	15mm X Ø7.20mm
AL20-40046	15mm X Ø7.50mm
AL20-40047	15mm X Ø8.00mm
AL20-40048	15mm X Ø8.70mm
AL20-40049	15mm X Ø9.50mm
AL20-40050	15mm X Ø10.30mm
AL20-40051	15mm X Ø11.10mm
AL20-40052	15mm X Ø11.90mm

Table 3.2

4. MAINTANANCE

If any CO2 nozzles are found to be in a poor condition, (rusty, damaged, etc.), please contact manufacturer.

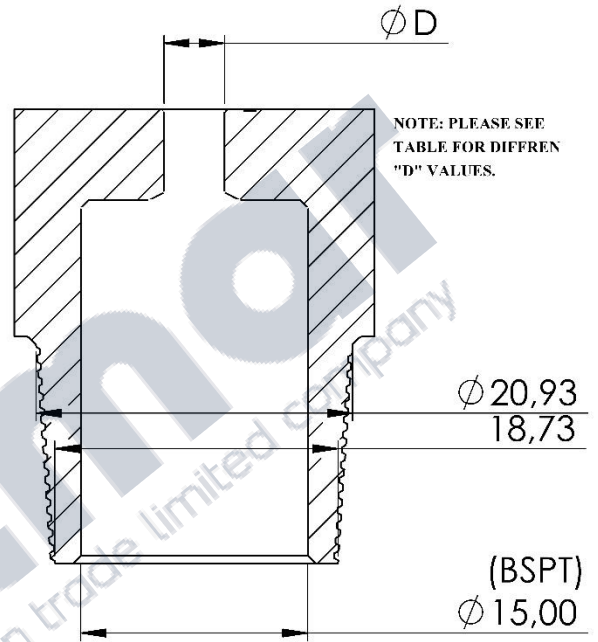
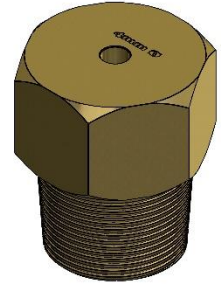
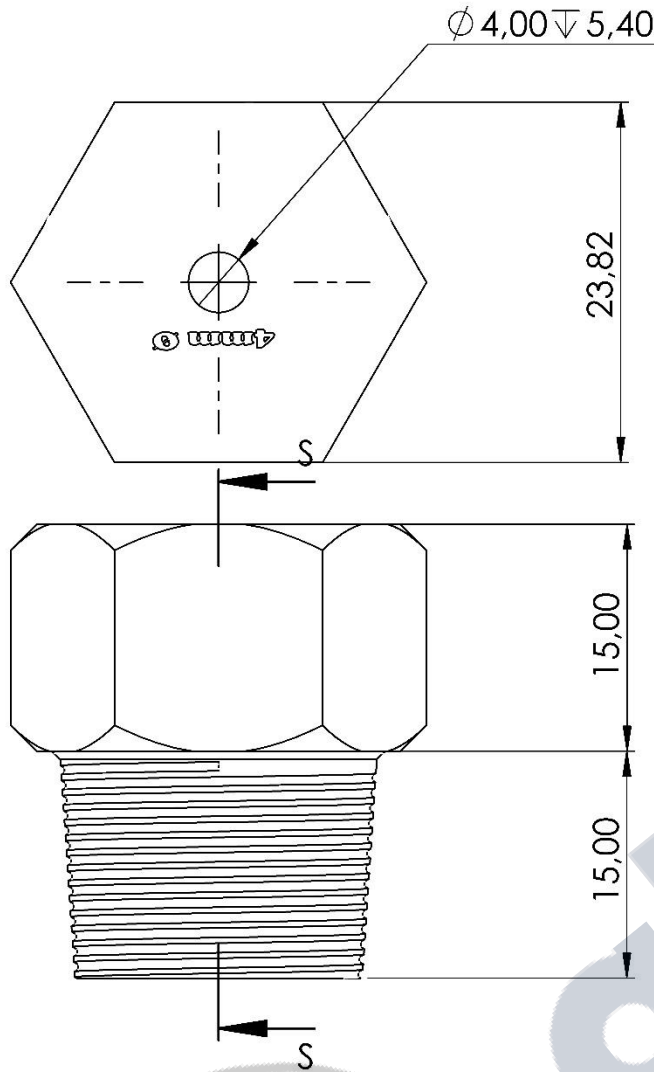
Annual inspections, it is recommended that this is performed by persons specially trained in the maintenance of such systems, e.g. manufacturer or recognised service company.

Full maintenance should be performed by persons specially trained in the maintenance of such systems, e.g. manufacturer or recognised service company.

5. DIMENSIONS & TECHNICAL DRAWINGS

Please see following page for detailed technical drawings.

NOZZLE



KESIT S-S

NOZZLE DIAMETER TABLE

D (DIAMETER)	POS. NO.	PROUDUCT NO.
15mm X Ø2.40mm	80A	AL20-40033
15mm X Ø2.80mm	80B	AL20-40034
15mm X Ø3.20mm	80C	AL20-40035
15mm X Ø3.60mm	80D	AL20-40036
15mm X Ø4.00mm	80E	AL20-40037
15mm X Ø4.40mm	80F	AL20-40038
15mm X Ø4.80mm	80G	AL20-40039
15mm X Ø5.20mm	80H	AL20-40040
15mm X Ø5.60mm	80I	AL20-40041
15mm X Ø6.00mm	80J	AL20-40042
15mm X Ø6.40mm	80K	AL20-40043
15mm X Ø6.80mm	80L	AL20-40044
15mm X Ø7.20mm	80M	AL20-40045
15mm X Ø7.50mm	80N	AL20-40046
15mm X Ø8.00mm	80X	AL20-40047
15mm X Ø8.70mm	80P	AL20-40048
15mm X Ø9.50mm	80R	AL20-40049
15mm X Ø10.30mm	80S	AL20-40050
15mm X Ø11.10mm	80T	AL20-40051
15mm X Ø11.90mm	80U	AL20-40052

NOTE: ALL DIMENSIONS ARE GIVEN AS MILLIMETERS

DRAWING NO:	POS. NO. SEE TABLE	PROUDUCT NO: AL20-40033 TO AL20-40058	DATASHEET: AL20-40033Rev00 TO AL20-40058Rev00	PAGE A4
DESIGNED BY: ALİ ARMAĞAN	CHEKED BY: ÇAĞLAR LATİFOĞLU	APPROVED BY: ERDİNÇ LATİFOĞLU	DATE: 11/09/2020	SCALE: 1:1



PROJECT / PROUDUCT: CO₂ NOZZLE

WEIGHT: -	METARIAL: -	REVISION: Sep20-Rev00	SHEET 1
-----------	-------------	-----------------------	------------