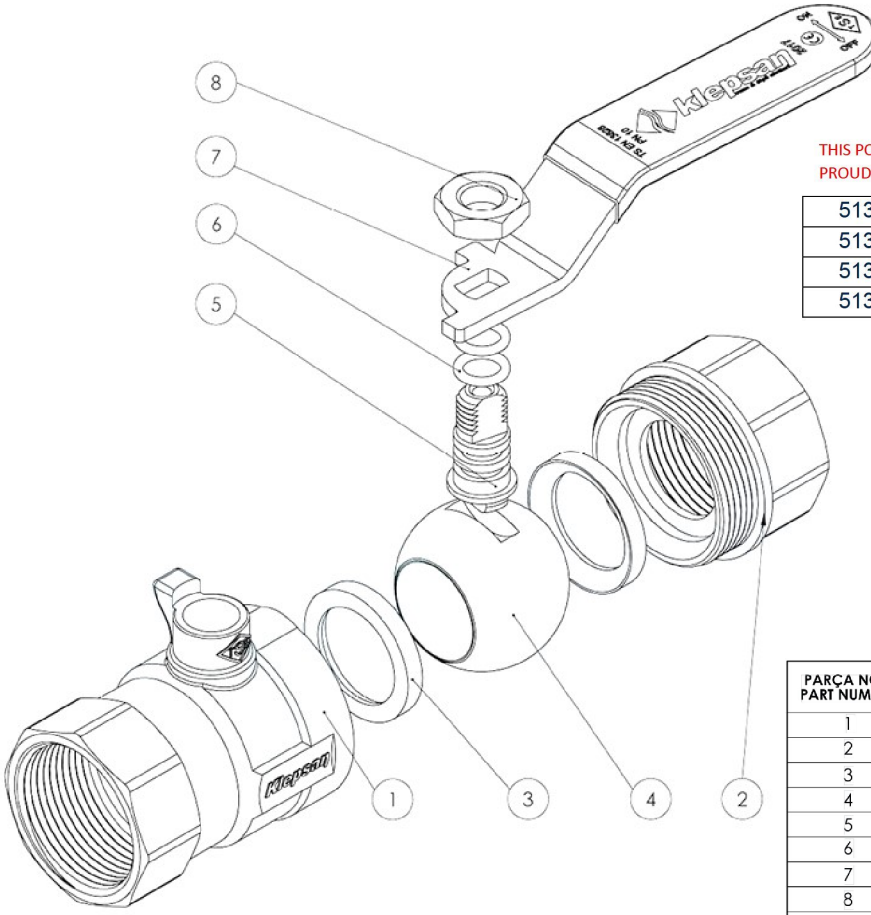


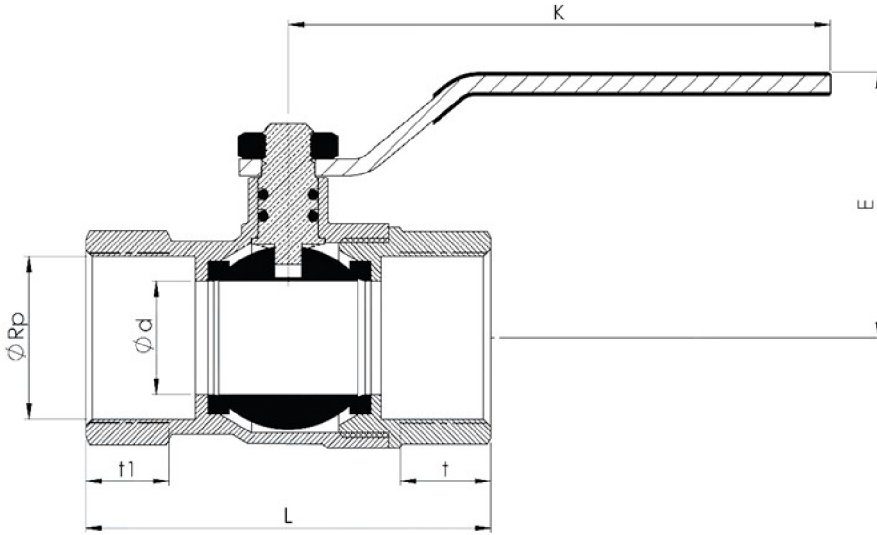
L.A.S. BALL VALVE



THIS PRODUCT MAY SHOW DIFFERENCE DEPENDS TO THE PROJECT, YOUR PRODUCT MARKED WITH A RED PRODUCT

513	AL30-513-25	Ball valve DN25/PN16
513	AL30-513-32	Ball valve DN32/PN16
513	AL30-513-40	Ball valve DN40/PN16
513	AL30-513-50	Ball valve DN50/PN16


PARÇA NO / PART NUMBER	PARÇA ADI / PART DESCRIPTION	MALZEME / MATERIAL	ADET / PCS.
1	Gövde (Body)	MS 58 Pirinç / Brass (CuZn39Pb2)	1
2	Kapak (Lid)	MS 58 Pirinç / Brass (CuZn39Pb2)	1
3	Teflon (Gasket)	PTFE (TF1645)	2
4	Küre (Ball)	MS 58 Pirinç / Brass (CuZn39Pb2)	1
5	Mil (Shaft)	MS 58 Pirinç / Brass (CuZn39Pb2)	1
6	O-Ring	EPDM (Viton)	2
7	Kol (Stem)	St 37 / Steel	1
8	Somun (Nut)	Ç1050 / Steel	1



ANMA ÖLÇÜSÜ NOMINAL SIZE (Rp)	Ød	L	K	t	E
1/2"	12	54	80	15	37
3/4"	17	61	95	16,5	53
1"	25	73	115	19,3	55
1 1/4"	30	83	115	21,5	59
1 1/2"	40	95	125	21,5	77
2"	46	113	145	26	90
2 1/2"	58	132	230	30,5	107
3"	70	149	250	33,5	120
4"	85	174	250	39,5	135

ALL DATA COMPILED FROM MANUFACTURER(KLEPSAN) DATASHEET



DRAWING NO:	POS. NO. -	PRODUCT NO: AL30-513	DATASHEET:	PAGE A4
DESIGNED BY:	CHEKED BY:	APPROVED BY:	DATE: 23/10/2020	SCALE:
		PROJECT / PRODUCT: BALL VALVE		
WEIGHT: -		METARIAL: -		REVISION: DEC20-Rev00
				SHEET 1