



1. GENERAL&APPLICATION

Local application system led indication panel(AL30-506)., provides visual access to the local application system. If any detector is active, indication panel provides visual access to the information about sections or system, for any necessary intervention trained and authorized personnel must use the main panel.FIG 1.2.

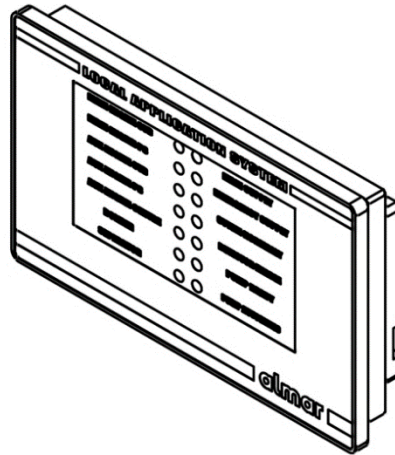


Fig 1.2

2. INSTALLATION

Local application system led indication panel (AL30-506), Install to the vessel main panel or request for housing.

3. MAINTANANCE

Panel has electronic card inside, be sure that all terminal blocks are connected and tight.

Check the panel visually and approve that no scratch or damage on the panel

Be sure that panel is functional



4. USAGE

Indication Panels shows status of system. Screen shots given below from “AL30-506 LCD INDICATION PANEL” cell’s meanings on the panel.

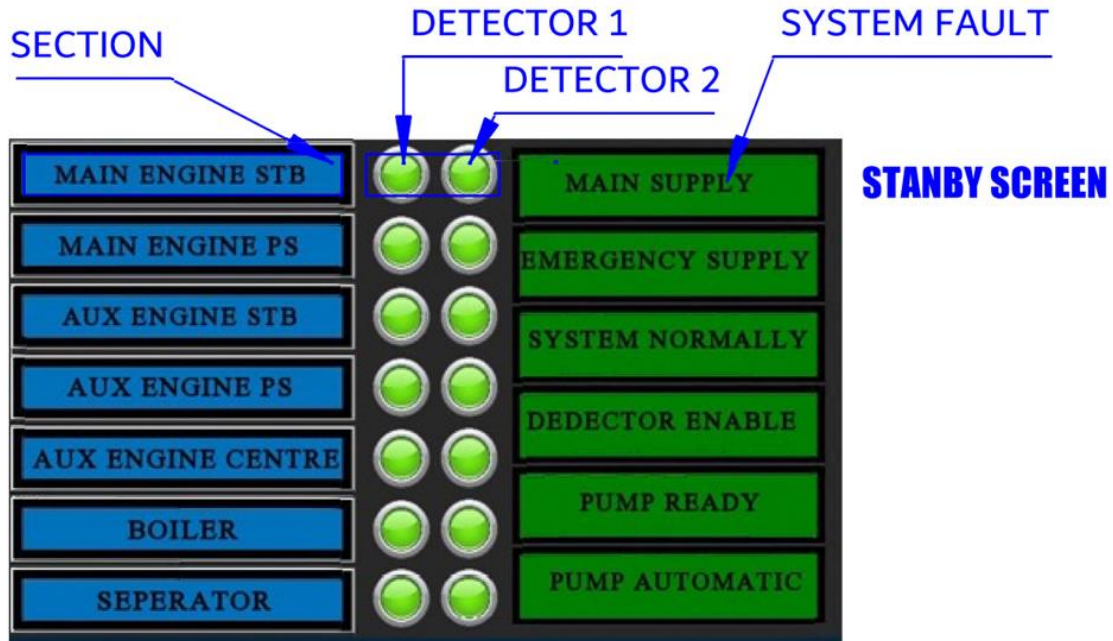


FIG T4.1 INDICATION PANEL STAND BY SCREEN

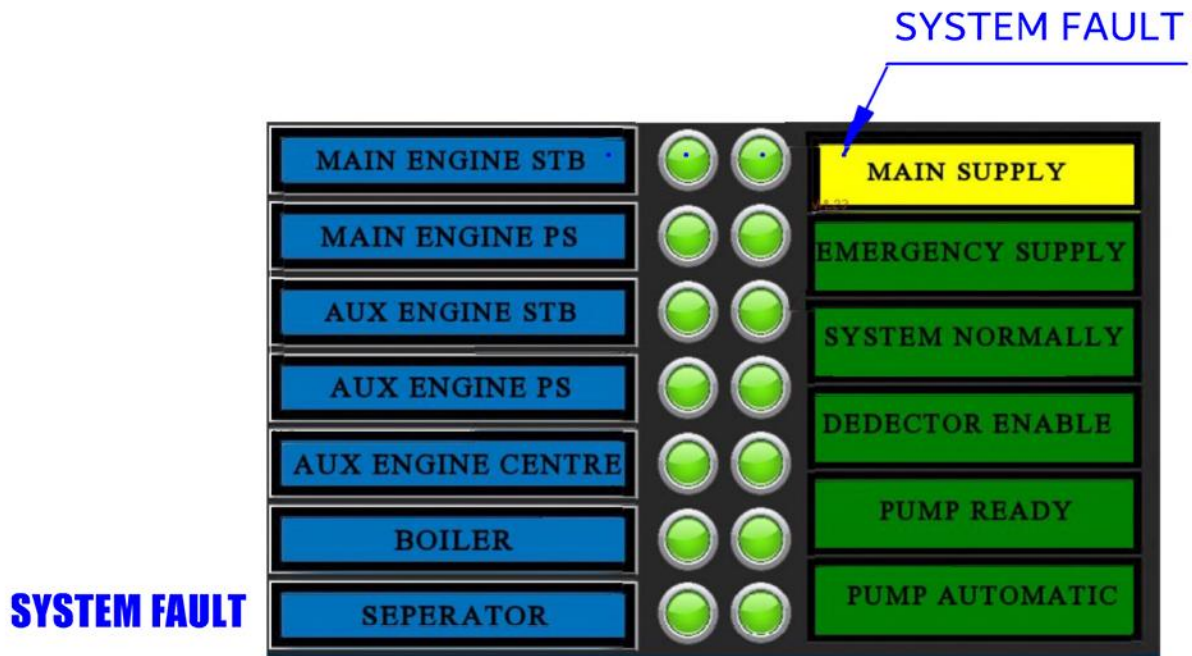


FIG T4.2 SYSTEM FAULT SCREEN

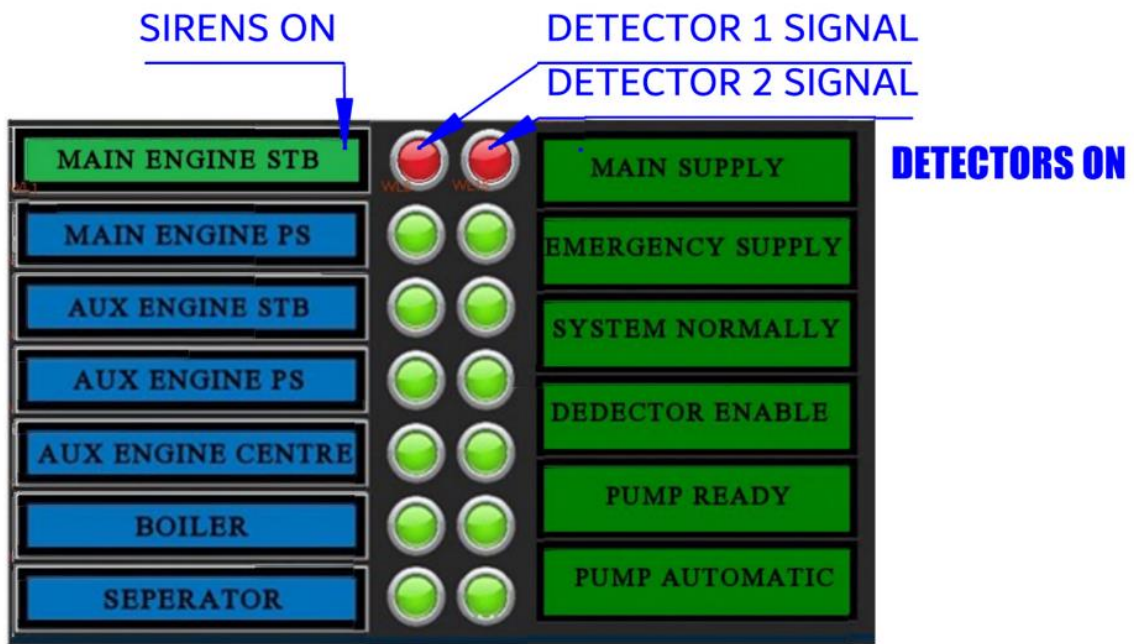


FIG T4.3 FLAME AND SMOKE DETECTED

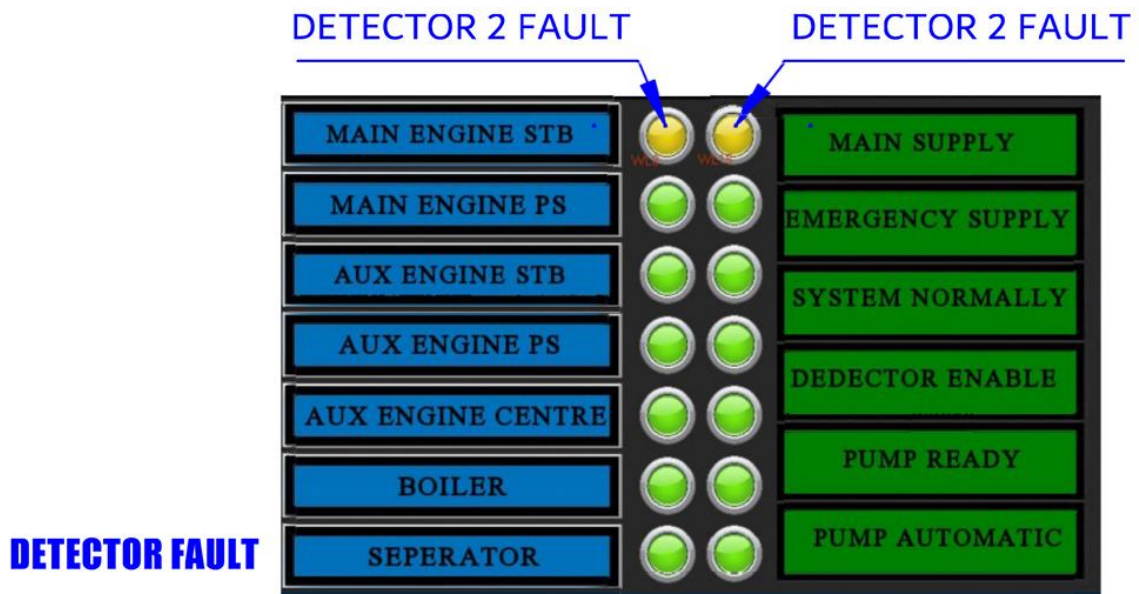


FIG T4.4 ONE OR TWO OF THE DETECTORS FAULT

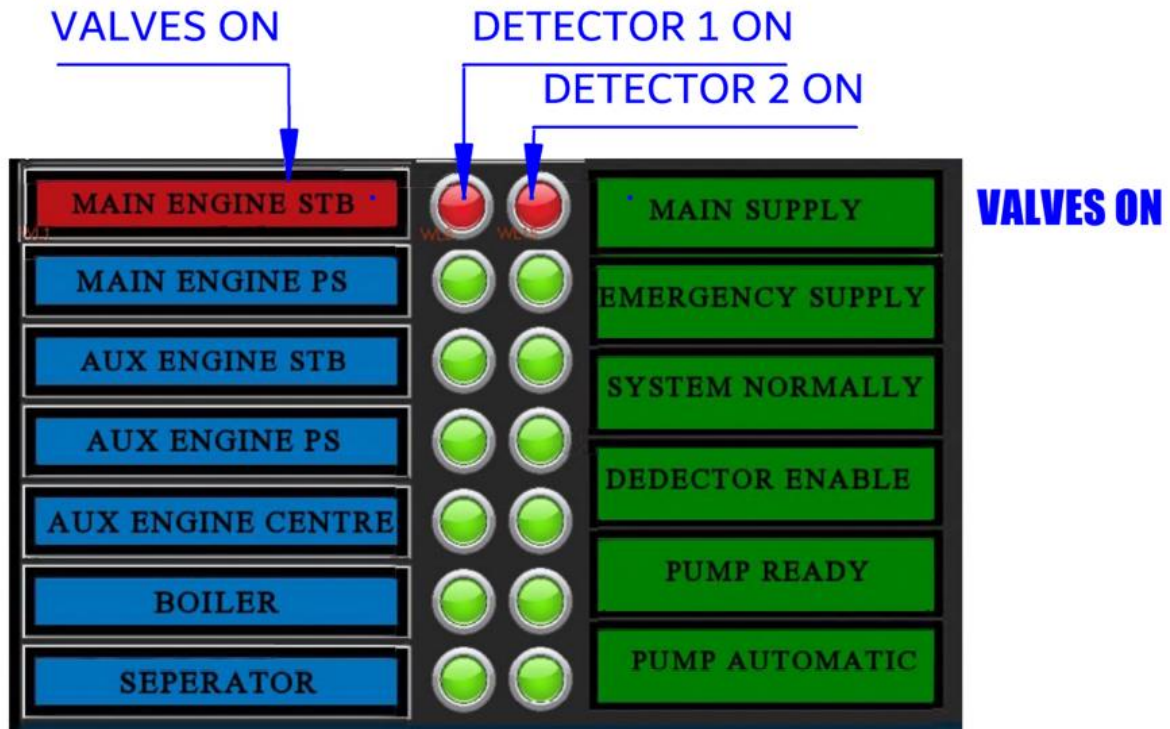


FIG T4.5 VALVES ON, EXTINGUIS SEQUINCE BEGIN

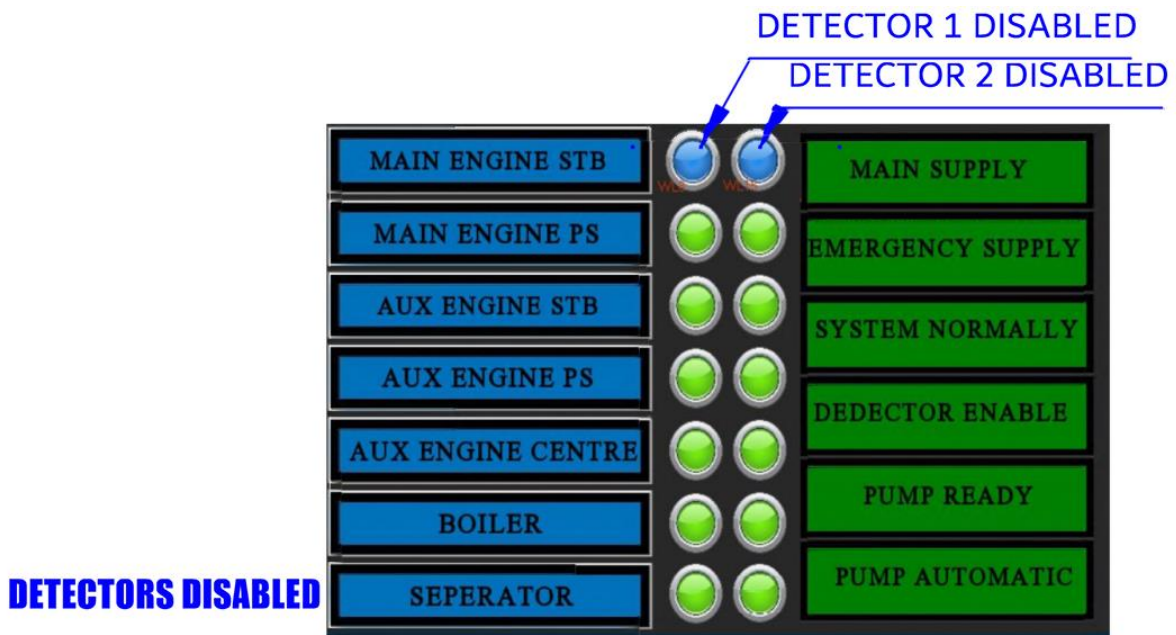


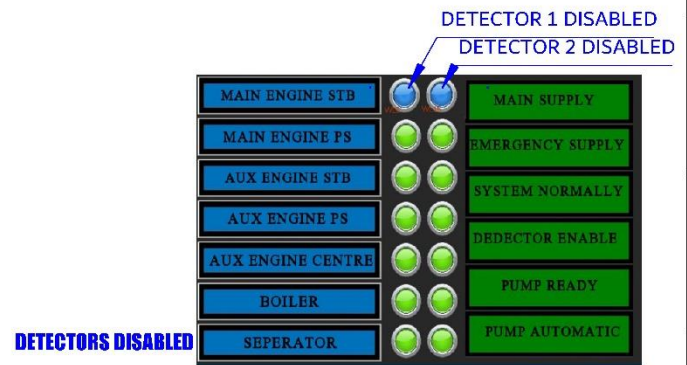
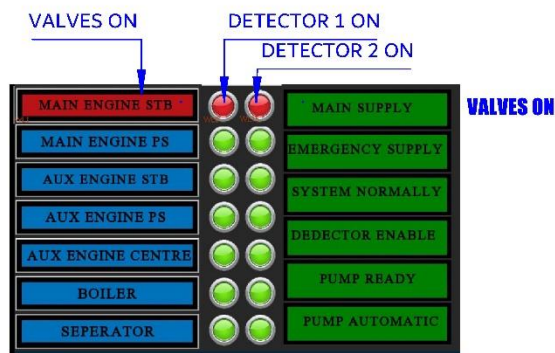
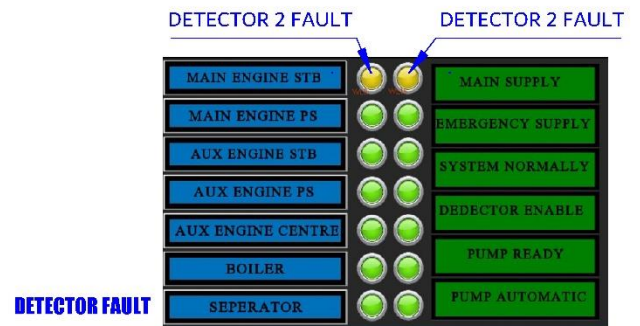
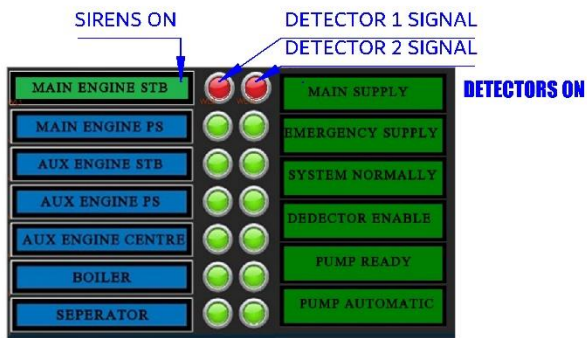
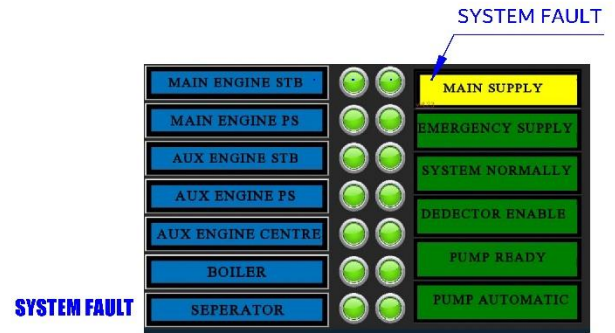
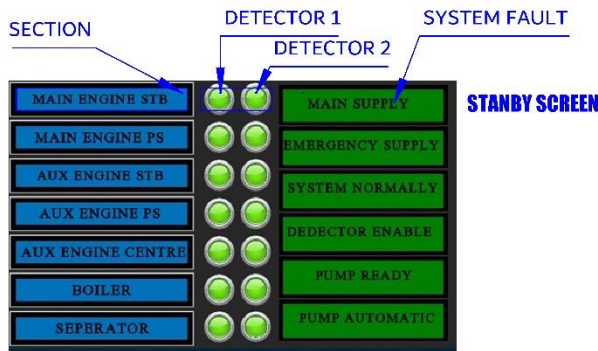
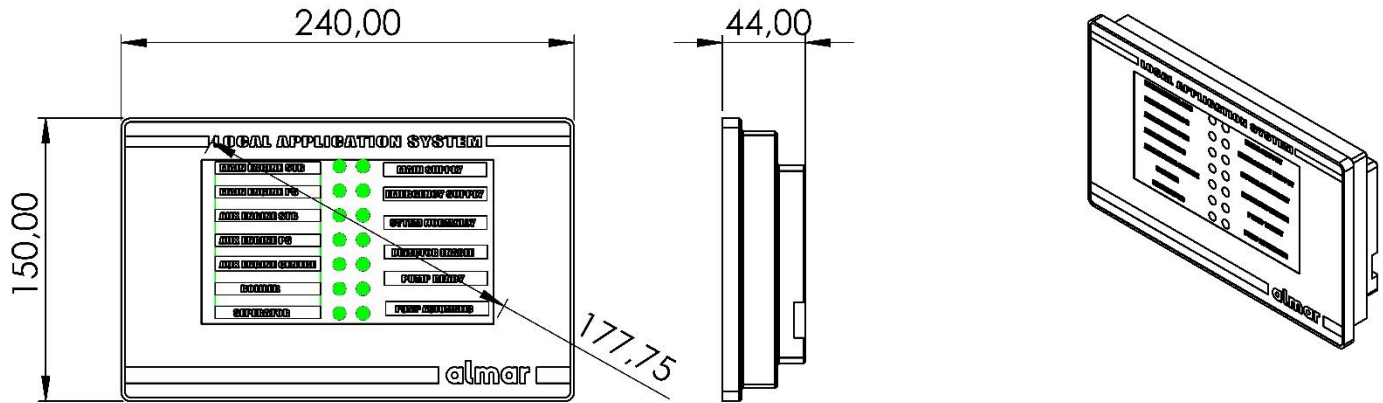
FIG T4.6 DISABLED DETECTORS

IF NOT NECESSARY PLEASE DO NOT ISOLATE ANY DETECTOR. BE SURE THAT DETECTOR IS ON AGAIN

5. DIMENSIONS&DRAWINGS

PLEASE SEE NEXT PAGE FOR DIMENSIONS


L.A.S. LCD INDICATION PANEL



Local application system lcd indication panel, Install to the vessel main panel or request for housing, detailed installation instructions are given at datasheet

Local application system lcd indication panel, provides visual access to the local application system. If any detector is active, indication panel provides visual access to the information about sections or system, for any necessary intervention trained and authorized personnel must use the main panel.

NOTE: ALL DIMENSIONS ARE GIVEN AS MILLIMETERS

| | | | | | |
|---|--------------------------------|--|-----------------------------|-----------------------|-------|
| DRAWING NO: | POS. NO. - | PRODUCT NO: AL30-506 | DATASHEET: AL30-506REV00 | PAGE | A4 |
| DESIGNED BY: ALİ ARMAĞAN | CHEKED BY: ÇAĞLAR LATİFOĞLU | APPROVED BY: ERDİNÇ LATİFOĞLU | DATE: 23/10/2020 | SCALE: | 1:2 |
|  | | PROJECT / PROUDUCT: LOCAL APPLICATION SYSTEM LCD INDICATION PANEL | | | |
| | | WEIGHT: - | METARIAL: - | REVISION: DEC20-Rev00 | SHEET |