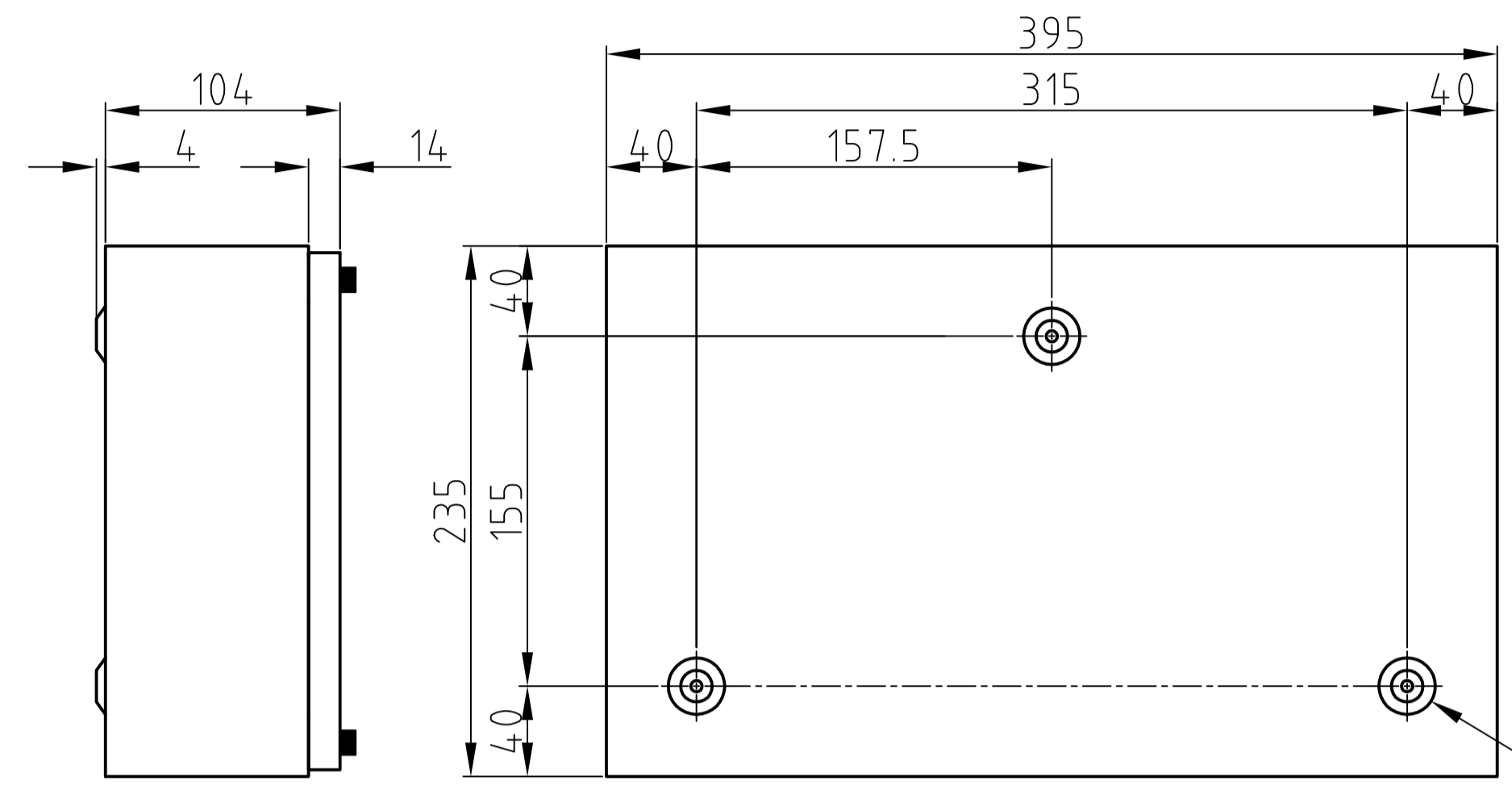
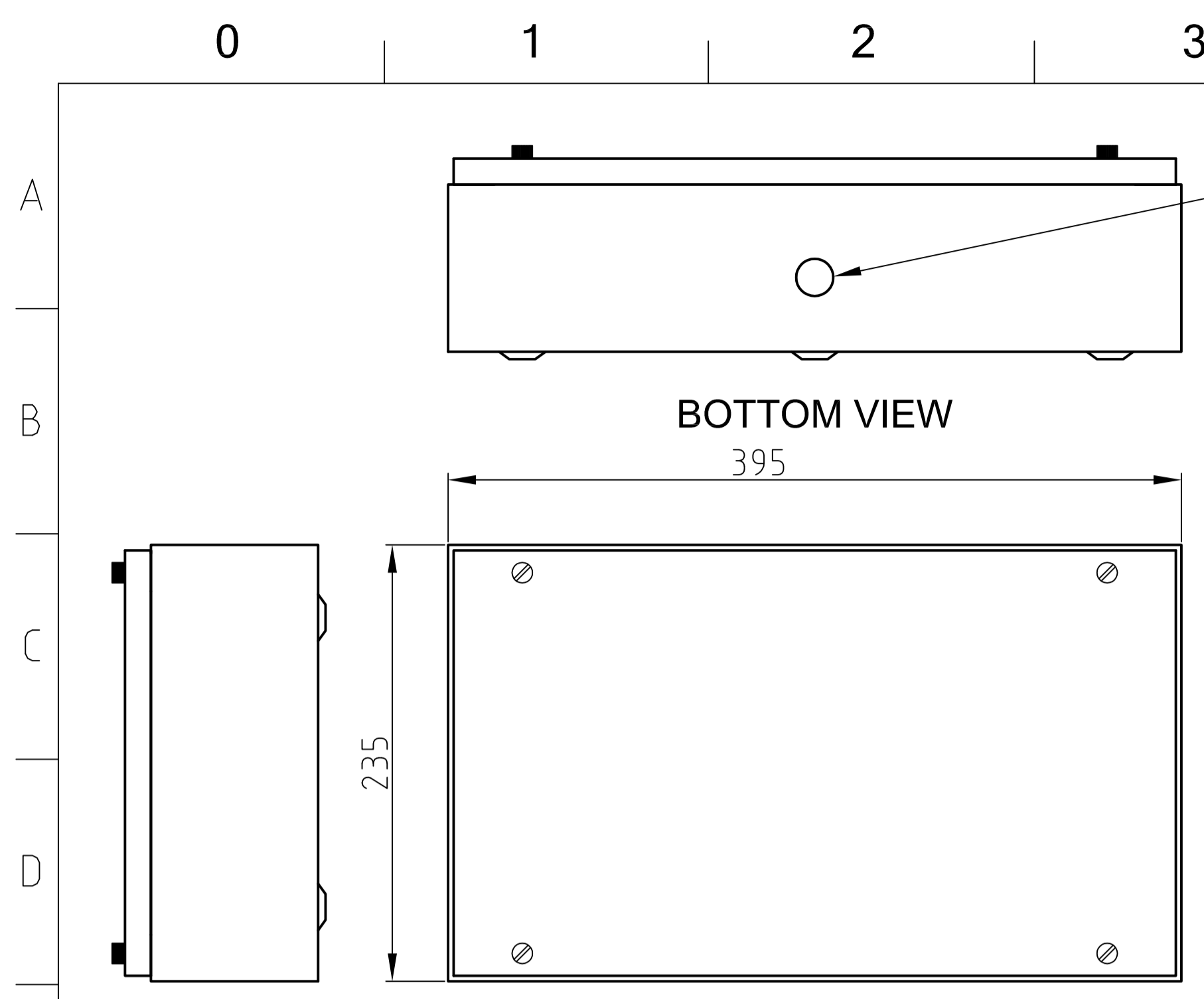

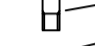
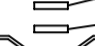
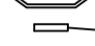
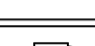
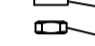


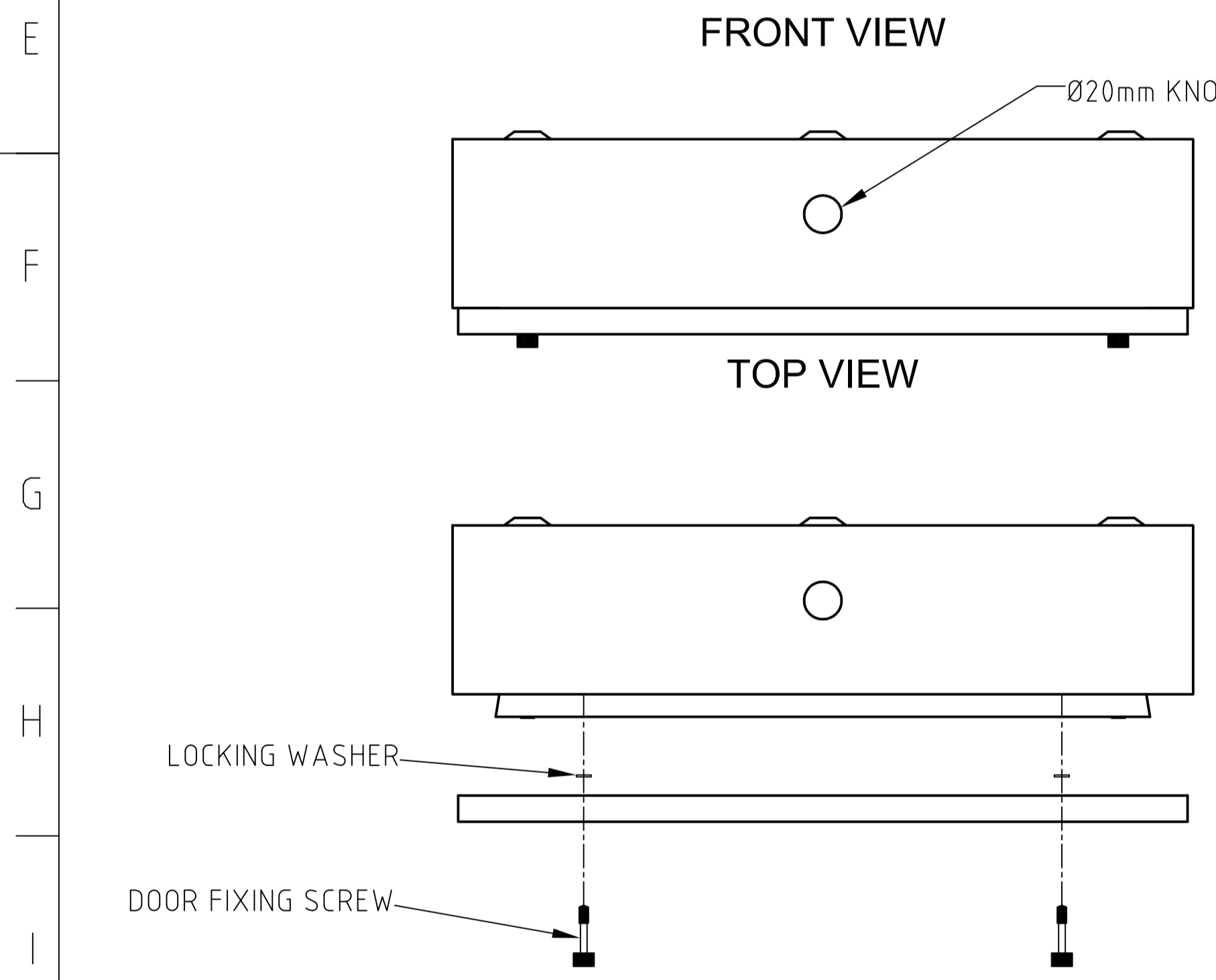


DRAWING No. MS508.023.123 SHT. 1/2 REV. 0



- MOUNTING DETAILS (3 PLACES)**
-  M5 STAINLESS STEEL BOLT
 -  M5 PLAIN STAINLESS STEEL WASHER
 -  RUBBER WASHER (SUPPLIED)
 -  ENCLOSURE
 -  RUBBER WASHER (SUPPLIED)
 -  FIXING SURFACE
 -  M5 PLAIN STAINLESS STEEL WASHER
 -  M5 FULL NUT (STAINLESS STEEL)



TECHNICAL DATA
 DIMENSIONS: 395mm WIDE x 235 HIGH x 104 DEEP
 ENCLOSURE: ENCLOSED SPACES SUBJECT TO TEMPERATURE, HUMIDITY & VIBRATION.
 WEIGHT: WITHOUT BATTERIES - T1200B-C - 4.4Kg

ENCLOSURE
 DOOR: 1.6mm MILD STEEL
 BACKBOX: 1.6mm MILD STEEL

FINISH:

- PRE TREATMENT - ELECTRO ZINC PLATED & FULL PASSIVATION
- POWDER COAT, SEMI GLOSS LEATHERETTE POLYESTER AT 70-80 MICRONS.
- COLOUR - DAWN GREY BS4800 10A 03.

CABLE ENTRY
 1 x 20mm TOP, 1 x 20mm BOTTOM MOUNTING

WIRE SIZE
 MIN: 0.5 sqmm
 MAX: 2.5 sqmm

PART NUMBERS
 T1200B-C - BATTERY BOX -
 TYCO PART NUMBER 508.023.123



CONFIDENTIALITY NOTICE : THIS DOCUMENT INCLUDING ALL INFORMATION CONTAINED THERIN IS OWNED BY THORN SECURITY LTD & MUST BE KEPT IN CONFIDENCE & USED SOLELY FOR THE OWNER'S SPECIFIED PURPOSES. THIS DOCUMENT MUST NOT BE COPIED OR REPRODUCED, NOR DIVULGED, IN WHOLE OR PART, WITHOUT THE OWNER'S PRIOR WRITTEN CONSENT.

DRN.	B.E.	CLIENT	STANDARD DRAWING		
DATE	06-09-12	PROJECT	STANDARD DRAWING		
CHKD.	A.J.C.	TITLE	T1200B-C ENCLOSURE INSTALLATION DETAILS		
DATE	06-09-12	SIZE	A1	SCALE	N.T.S.
APPR.	J.B.J.	DRAWING No.	MS508.023.123		SHT. 1 OF 2
DATE	06-09-12	REV.	0		0

REV.	TASK	DESCRIPTION	DATE	DRAWN	CHKD.	APPR.
0		NEW DRAWING				

<p>NOTES</p> <p>1: All dimensions shown are toleranced as +/- 0.25mm (Unless otherwise stated)</p>	CONTRACT No.	
	PROJECT	N/A
	CLIENT	N/A
	DATE	06-09-2012
	SCALE	N.T.S.
	ENGINEER	AJC
<p>CONTROL EQUIPMENT</p> <p>Control Equipment Limited Hillcrest Business Park Dudley West Midlands, DY2 9AP. TEL: 01384 458651 FAX: 01384 458972</p>	<p>OFFICE OF ISSUE</p> <p>DUDLEY</p>	
<p>DISK ID: DS508.023.123-1_0.dwg</p>	<p>TITLE</p> <p>T1200B-C ENCLOSURE INSTALLATION DETAILS</p>	
<p>REV. 0</p>	<p>DRAWING No.</p> <p>DS508.023.123-1</p>	